

A welder wearing a mask and gloves is working on a metal piece in a factory. The image is overlaid with a blue tint. The text "Manufacturing PA Innovation Program" is written in large, bold, white letters across the center. The date "Oct. 2020" is written in smaller white letters to the right of the main title.

Manufacturing PA Innovation Program

Oct. 2020

Program Video

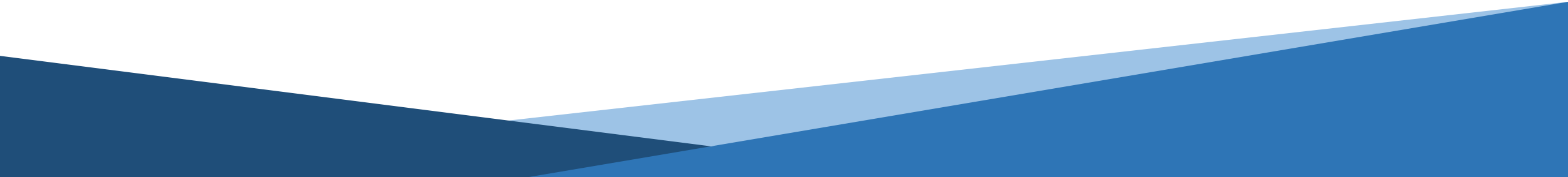


Management & Funding

- Funded by the PA Department of Community & Economic Development Program
- Managed by Carnegie Mellon
- \$790,000 for FY21 (partial budget)



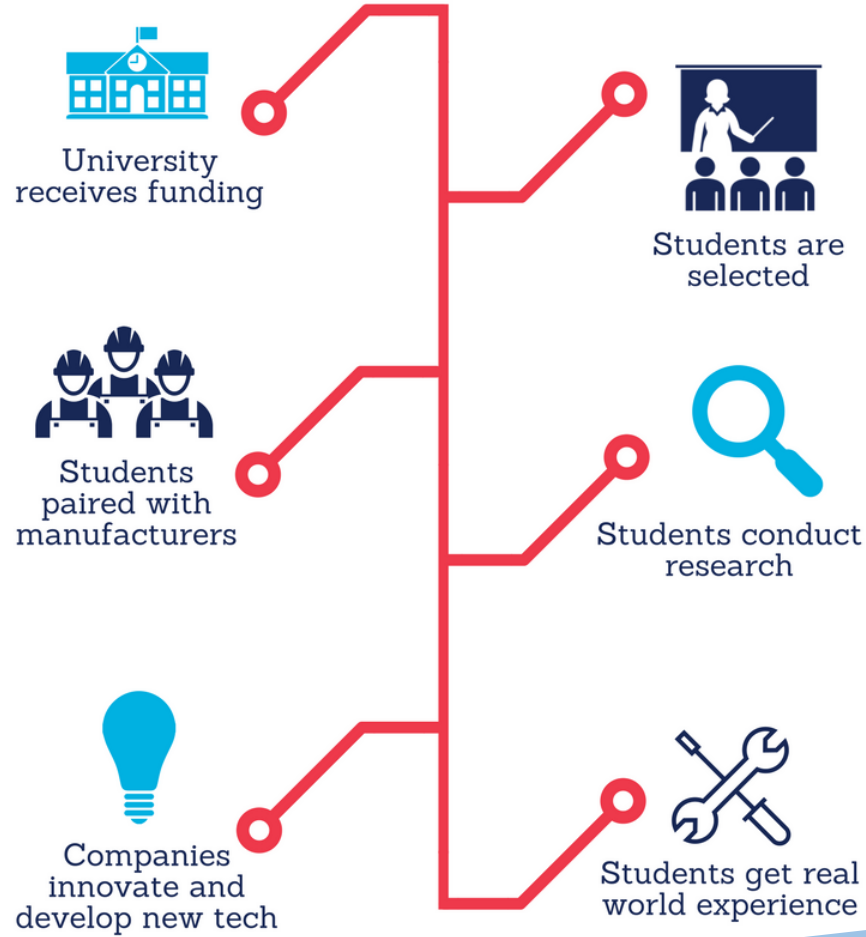
Program Goals

- Focus the science and engineering capabilities of PA's world-class research universities on real-world manufacturing solutions for PA.
 - Create a program that is PA manufacturing company-driven to enable projects that will promote innovation in PA's manufacturing job creators.
 - Create an environment linking PA companies with students to interest and retain highly-educated students in the field of manufacturing.
 - Provide PA companies with a competitive technology edge by introducing them to researchers and universities with equipment and skill sets.
 - Provide assistance to PA companies in identifying faculty experts and students.
- 

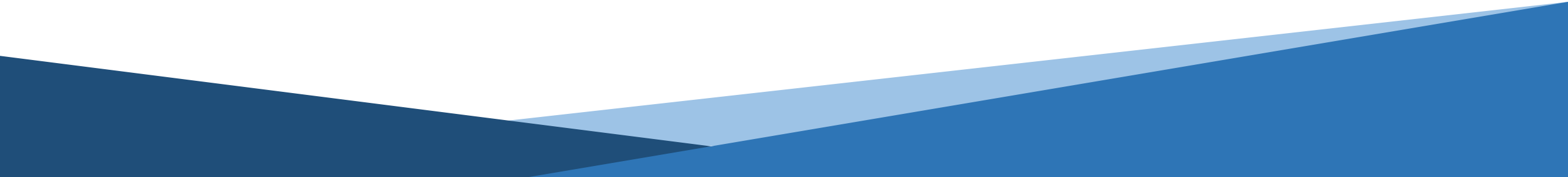
GOVERNOR WOLF LAUNCHES

MANUFACTURING PA

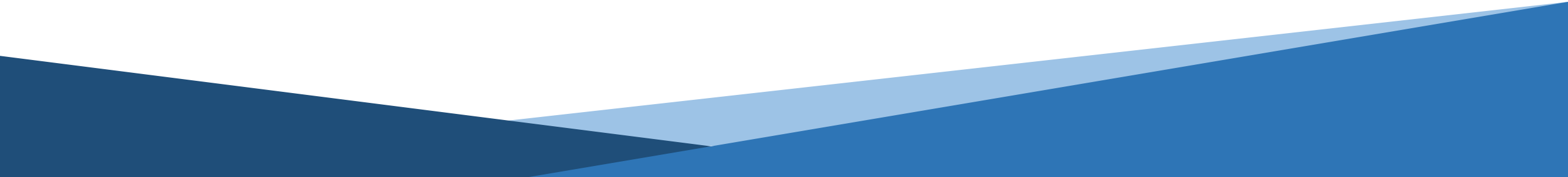
FELLOWSHIP




Company Opportunities

- Solve a problem and/or advance the development of new technologies
 - Gain new insights into a specific discipline or technical area
 - Seed early-stage research and promote interest in a new area
 - Access to faculty expertise
 - Early access to students for potential recruitment
 - Access to equipment and specialized facilities
- 

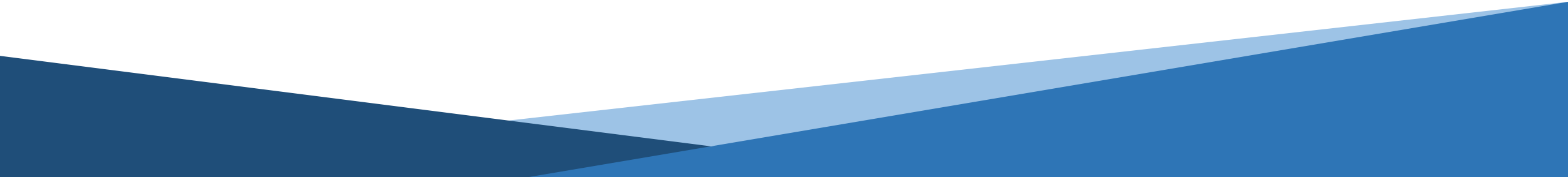
University Opportunities

- Opportunity to work on real-world challenges
 - Opportunity to take technologies from the lab to market
 - Opportunity to expose students to industry culture and better prepare them for future employment
- 

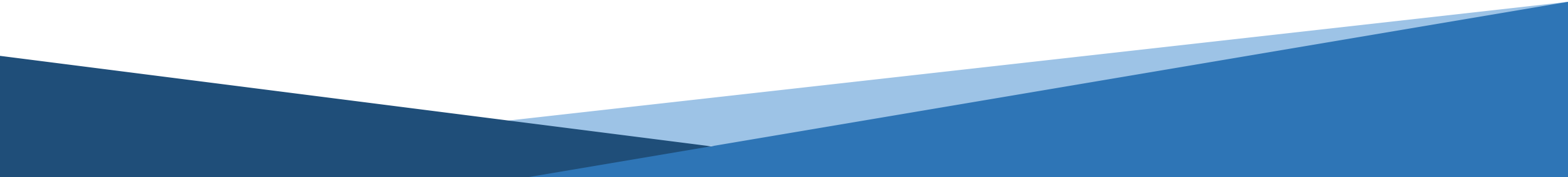
Project Requirements

- \$70,000 Maximum
 - Faculty serve as project PI
 - Project must involve a PA manufacturing company
 - Project focuses on a new product or process innovation
 - PMFI funding used primarily to support graduate or undergraduate student effort in the project
 - 1-1 Leverage Required
 - Project/Capstone Courses Eligible
- 

Match Requirements

- Project partners contributes through either
 - Direct Financial Support
 - In-kind Support (material donation, equipment usage, staff time/technical guidance, etc.)
 - Application must quantify and describe leverage in company letter of support
 - University leverage may also be included in budget form
 - May include under-recovered indirect costs
- 

Budget Categories

- Student Fellow
 - Research-related expenses (Materials/Supplies/Non-Cap Equip or Software)
 - Travel
 - 10% Indirect Cost Rate
 - Faculty Salary NOT Allowed
 - Industry Expenses NOT Allowed
- 

How to Submit A Proposal



Manufacturing PA Innovation Program

About **Get involved** **Partners** [Proposals](#) [Research](#) [Projects](#) [Contact us](#)



[HOME](#) /

Proposals

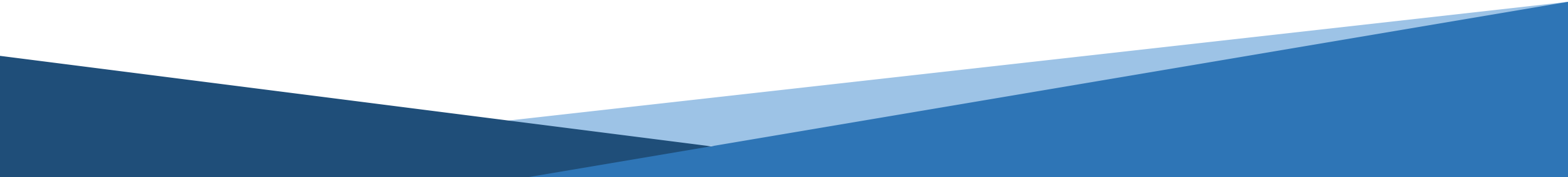
DCED is now soliciting proposals from faculty Principal Investigators (PI) for projects that fit within the PMFI mission and [program guidelines](#). Proposals must include a collaboration with an industry partner. Please note that companies may serve as project collaborators, but they may not receive state funding. Any company that would like to partner with a university on a project, but has not yet identified a faculty member, should complete an [inquiry form](#). The information will be used to identify potential faculty collaborators for the company to consider.

Detailed information about the project requirements, review criteria, proposal template, budget request, and award management is included in the proposal guidelines. The application period closed on June 12. Faculty may submit proposals by using the link below. The proposal form requires the submission of the Technical Proposal Template (template may be downloaded below) along with a proposed budget, budget justification, industry letter(s) of support and University statement of intent.

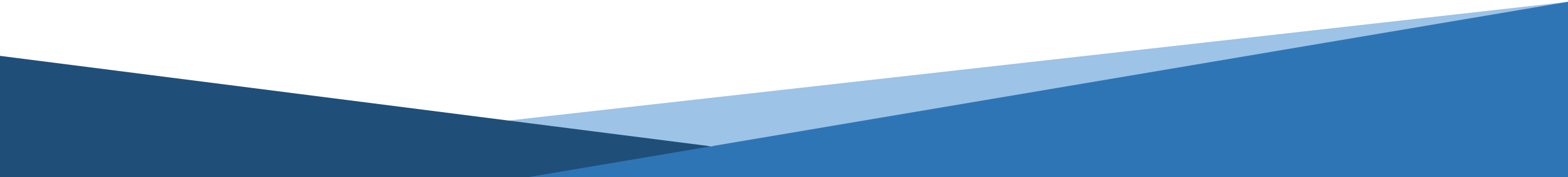
Proposal Information

- [Technical Proposal Template](#)
- [Proposal Guidelines](#)

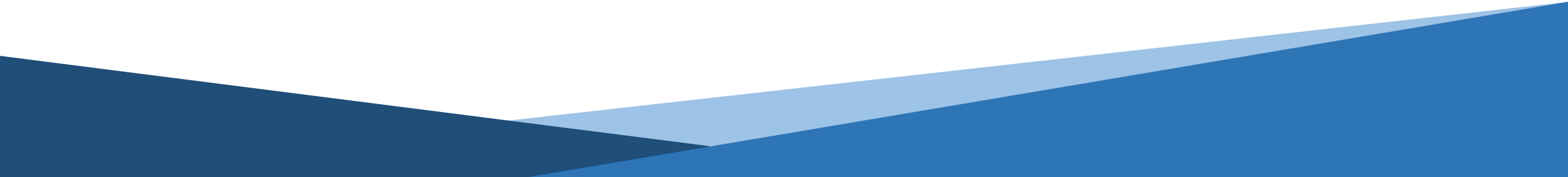
Proposal Review Criteria

- Active Participation of Manufacturers and Impact on PA
 - Active Participation of Graduate/Undergraduate Fellows
 - Technical Approach
- 

Proposal Timeline

- Proposal Period: Oct. 12, 2020 – Nov. 23, 2020
 - Technical and Business Case Reviews: Dec. 2020 - Jan. 2021
 - Award Notifications: By Mar. 1, 2021
 - Projects Period of Performance: May 15, 2021 – Aug. 31, 2022
- 

How to Get Involved

- Match Faculty on Company-Initiated Projects
 - Recognize Manufacturing Fellows
 - Identify Reviewers
 - Serve on Annual Meeting Planning Committee
- 

Company Initiated Projects

ManufacturingPA.org Website

- **Work with PA Manufacturing Fellows Initiative**

The PA Manufacturing Fellows Initiative (PMFI) is always looking for new partners. Partnership with PMFI could provide your organization with early access to research, collaborative research projects, recruiting opportunities, event and research branding opportunities, and much more. If you have an idea for a project or would like more information about the program, please complete the [inquiry form](#). Your project idea will be circulated to PA's seven engineering research institutions to identify potential faculty collaborators for your company to consider.

- **Inquiry Form**

- Topic
- Short Company Overview
- Project idea, question or technical challenge to be solved

Faculty Response



Description

Primary Investigator:

- Project team:
- Opportunity / Need:
- Value Proposition:
- Proposed Concept:

Current Status:

- Background:
- Facilities:

Risks / Unknowns

- Technical:
- Commercial:
- Scale-up, validation:
- Experimental, computational:

Project Plan:

- Goals of the project:
- Length of research:
- Collaborations:
- Other findings:
- Operational expense:

Thank You

The bottom of the slide features three overlapping triangular shapes in shades of blue. A dark blue triangle is on the left, a medium blue triangle is in the center, and a lighter blue triangle is on the right, all pointing upwards towards the center of the slide.